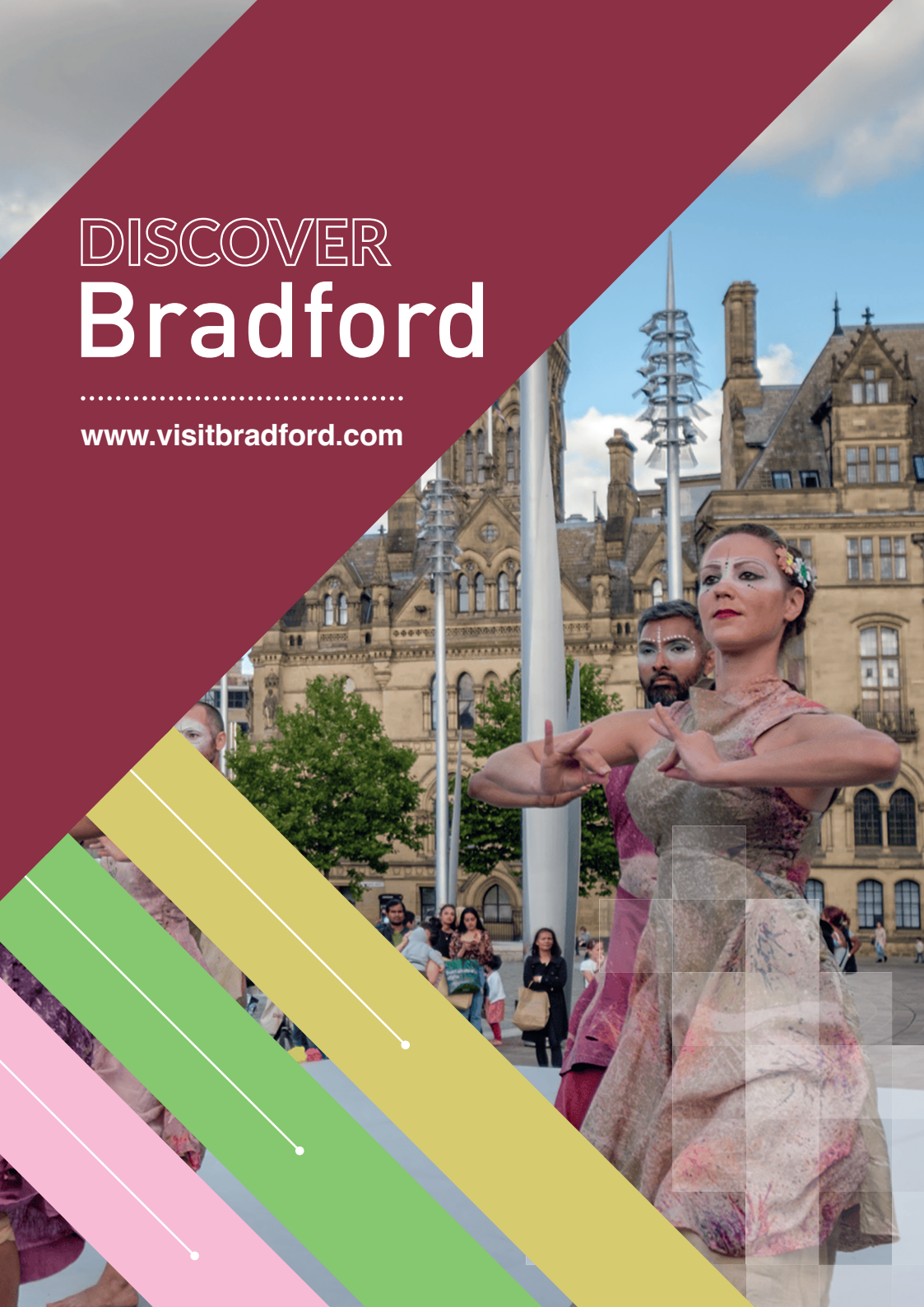


# DISCOVER Bradford

.....  
[www.visitbradford.com](http://www.visitbradford.com)



# ABOUT Bradford

Step into the UK City of Culture 2025 to find a city brimming with history, culture and creativity.

Bradford is ready to celebrate its year in the spotlight. Visit to explore the stunning architecture, world-class exhibitions and unique film heritage in this UNESCO City of Film. Relax at City Park, enjoy performances at the Alhambra Theatre, visit the National Science & Media Museum and experience a city where past and present spark new adventures.



**BRADFORD 2025**  
UK City of Culture



# Bradford Explorer

## Itinerary Essentials

Make the most of the car-free city centre and arrive by bus or train; the city is compact and easily walkable with plenty of accommodation choices for your stay.

Head straight to City Hall, the Italianate clock tower is a striking landmark in the heart of the city and all roads lead from here!

### Top picks for your visit:

- See the spectacular fountains of City Park.
- Discover the exciting new look at the National Science and Media Museum.
- Visit the Wool Exchange, now possibly the country's most beautiful bookshop.
- Make time for retail therapy at The Broadway shopping centre.
- Enjoy shopping and dining at the new Darley Street Market.

### Into the evening:

- Take your seats for an evening of entertainment at the Alhambra Theatre.
- Settle down with your popcorn to enjoy a film in the world's first UNESCO City of Film.
- Enjoy live music in one of the many venues around the city centre.
- Spice up your life with a delicious curry, hot spots include Leeds Road and Great Horton Road.



# City Centre Heritage Trail



Bradford boomed during the industrial revolution, becoming the wool capital of the world and one of the most important trading centres in the UK. Its industrial and cultural heritage can still be admired today with a fine collection of historic buildings dotted around the city centre.



**06** Bradford City Hall

One of Bradford's most distinctive buildings, designed to rival the new town halls of Leeds and Halifax. The original building, with its 'Italianate' clock tower, was opened in 1873 and was designed by Bradford architects Lockwood and Mawson. The upper parts of the elevations contain 35 statues of Kings and Queens of England.



**08** Wool Exchange

The Wool Exchange symbolises the great wealth and importance that Bradford had gained from the wool trade by the mid-19th century. It was completed in 1867 to the design of Lockwood and Mawson. It is ornate 'Venetian Gothic' in style with very decorative roof parapets and pinnacles.



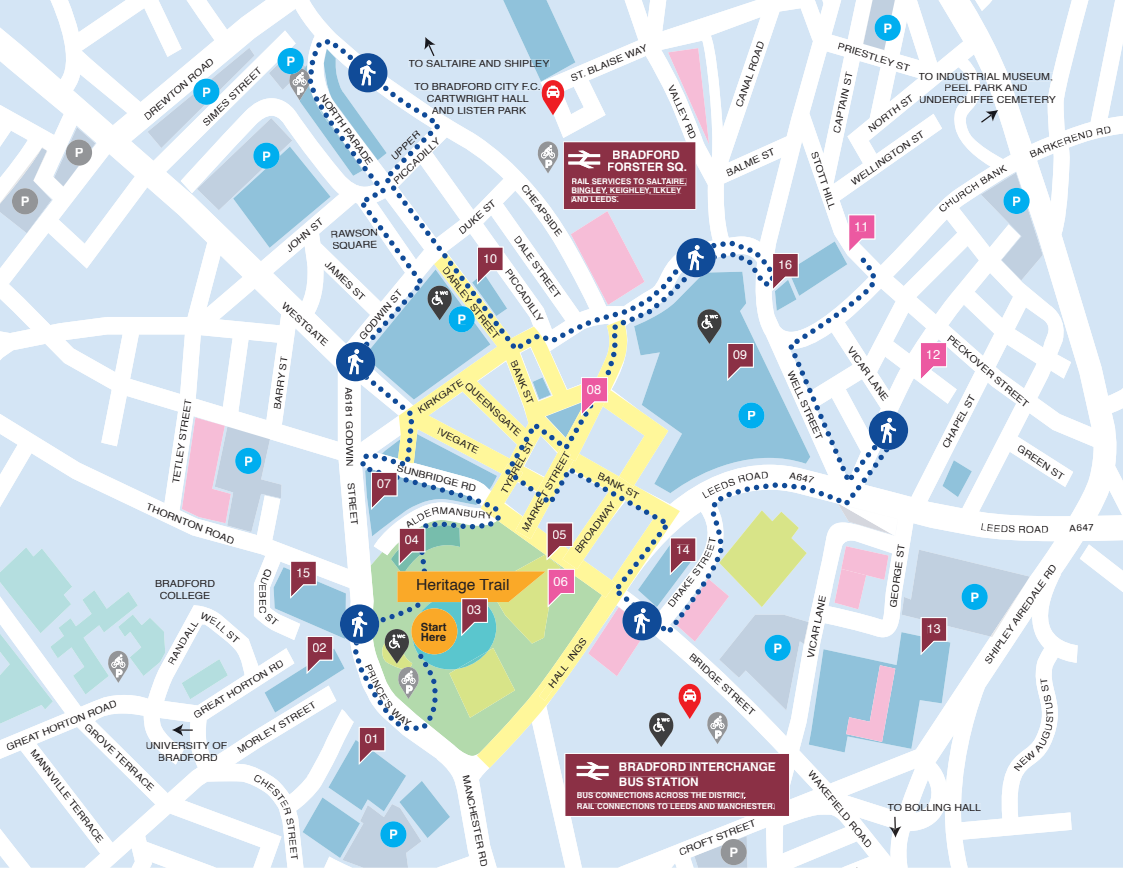
**11** Bradford Cathedral

The building dates largely from the 14th and 15th centuries. The church received cathedral status in 1919 and parts were remodelled in 1954 – 63 by Sir Edward Maufe. It contains some fine examples of sculpture and stained glass.



**12** Little Germany

A compact area of late Victorian warehouses and offices where merchants could store and sell goods in their own premises, rather than through the exchanges. The area has a highly distinctive character, and is a popular filming location.



## Bradford City Centre

01. National Science and Media Museum
02. Alhambra Theatre
03. City Park
04. Impressions Gallery
05. Bradford Police Museum
06. City Hall
07. Sunbridge Wells
08. Wool Exchange
09. The Broadway
10. Darley St Market
11. Bradford Cathedral
12. Little Germany
13. Leisure Exchange
14. St George's Hall
15. Bradford Live
16. Bradford Arts Centre

## Shopping in Bradford

Shop at **Bradford Markets**, independent stores, high-street brands, and **The Broadway Shopping Centre**, offering everything from vintage to modern fashion.



Shopping in Bradford

## Food & Drink

Bradford, the Curry Capital of Britain, offers delicious South Asian cuisine, along with a variety of cafés, bars, and international dining. Enjoy spots like **MyLahore**, **Sunbridge Wells**, and the vibrant bars of **North Parade**.



Explore the city's diverse food scene!



#### 01 National Science and Media Museum

Following a major update, the museum will be opening its new spaces and exhibitions from January onwards, alongside IMAX and other cinemas.

Bradford, BD1 1NQ  
[www.scienceandmediamuseum.org.uk](http://www.scienceandmediamuseum.org.uk)



#### 04 Impressions Gallery

A top UK photography venue, the gallery overlooks City Park, showcasing regional and international artists through exhibitions and events.

Centenary Square, Bradford, BD1 1SD  
[www.impressions-gallery.com](http://www.impressions-gallery.com)



#### 05 The Bradford Police Museum

Explore Bradford's history of policing, criminal justice, and crime, featuring authentic Victorian cells and a beautifully preserved courtroom.

Centenary Square, Bradford, BD1 1HY  
[www.bradfordpolicemuseum.com](http://www.bradfordpolicemuseum.com)



#### 11 Bradford Cathedral

Discover Bradford's historic gem, featuring William Morris-stained glass, Flaxman sculptures, and a vibrant events calendar throughout the year.

1 Stott Hill, Bradford, BD1 4EH  
[www.bradfordcathedral.org](http://www.bradfordcathedral.org)



#### 02 Alhambra Theatre

The venue hosts major touring companies like Northern Ballet and the National Theatre, along with West End shows like Matilda in 2025, and its popular pantomime.

Morley Street, Bradford, BD7 1AJ  
[www.bradford-theatres.co.uk](http://www.bradford-theatres.co.uk)



#### 14 St George's Hall

Renowned for its exceptional acoustics and intimate atmosphere, St George's Hall, opened in 1853, hosts live comedy, music, and entertainment.

Bridge Street, Bradford, BD1 1JT  
[www.bradford-theatres.co.uk](http://www.bradford-theatres.co.uk)



### 03 City Park

Visit the UK's largest urban water feature, a stunning event space ideal for relaxing, meeting up, and enjoying breathtaking views of City Hall, with a magical light display at dusk.

City Hall, BD1 1HY  
[www.cityparkbradford.com](http://www.cityparkbradford.com)



### Bolling Hall Museum

One of Bradford's oldest buildings, it supported the Royalists during the Civil War. Now a museum, it showcases the house's 500-year history.

Bowling Hall Road, Bradford, BD4 7LP  
[www.bradfordmuseums.org](http://www.bradfordmuseums.org)



### Cartwright Hall Art Gallery

Bradford's civic art gallery features 19th-20th century British art, contemporary prints, South Asian art, and a Hockney collection. It will host the Turner Prize in autumn 2025.

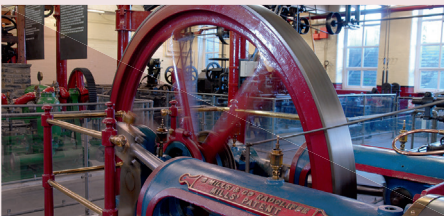
Lister Park, Bradford, BD9 4NS  
[www.bradfordmuseums.org](http://www.bradfordmuseums.org)



### Lister Park

Set around Cartwright Hall, the park features public art, a boating lake, playground, Mughal Water Gardens, and hosts a weekly parkrun.

North Park Road, BD9 4NS  
[www.bradforddistrictparks.org](http://www.bradforddistrictparks.org)



### Bradford Industrial Museum

Step into history with textile machinery, steam power, engineering, and motor vehicles. Explore Moorside House and millworkers' homes.

Moorside Road, Bradford, BD2 3HP  
[www.bradfordmuseums.org](http://www.bradfordmuseums.org)



### Undercliffe Cemetery

Described as a Victorian funerary masterpiece, explore grand monuments, tombs, obelisks, and mausoleums with city views. QR codes reveal their history.

127 Undercliffe Lane, Bradford, BD3 0DW  
[www.undercliffecemetery.co.uk](http://www.undercliffecemetery.co.uk)

# Bradford – A City to Explore!

Let us guide you through everything Bradford has to offer.

## How to Get Here

Bradford is easily reachable by train at **Forster Square** and **Interchange stations** and is served by **National Express**, **Megabus**, and local bus services. It's also well-connected by road via the **M606** and **M62** to national routes. Bradford has a Clean Air Zone, with no charges for passenger cars.



Scan the QR code for details

## What's On in Bradford?

Bradford is the UK City of Culture 2025, so expect even more amazing events than usual. Plus returning favourites, including the **Bradford Literature Festival** and **Widescreen Weekend**.





Find out what's on


## Stay Connected

For more information, including up-to-date details on where to stay, events, dining, and the rest of the Bradford district, go to **www.visitbradford.com** or connect with us on social media!

Follow us on:

 @visitbradford

 @visitbradford

 /visitbradford

The wording in this publication can be made available in other formats such as large print and Braille. Please call: 01943 602319



PHOTO ACKNOWLEDGMENT:

Bradford Explorer Header – Bradford Theatres © Nigel Hillier  
Impressions Gallery © Karol Wyszynski Courtesy Impressions Gallery